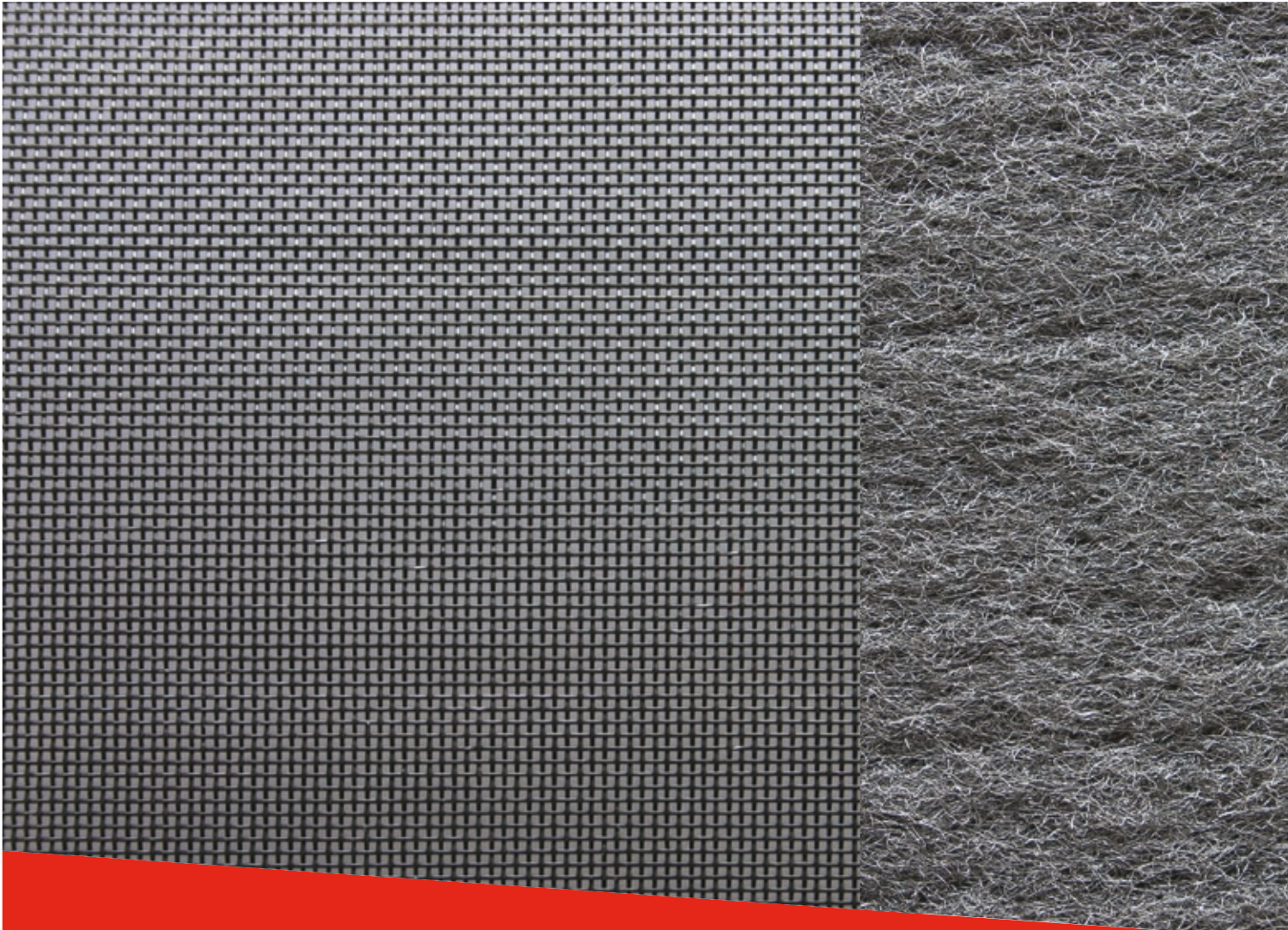


**bontec**

woven and nonwoven geotextiles



# GEOTEXTILE

WE UNDERCOVER  
THE WORLD



**Bonar**  
partners in performance

# Bontec Geotextile

Bontec is an internationally renowned brand of geotextiles. We have earned this reputation over the past thirty years thanks to our quality, service and flexible production processes. This flexibility is a result of the vertical integration of our production. We control the entire process – from raw materials to finished product – for both our woven and nonwoven varieties.

We are therefore not dependent upon the quality or delivery time of others, and we can guarantee your success. Our Bontec brand offers state of the art woven and nonwoven geotextiles that provide answers to meet all of your challenges. Thanks to continuous research and investment in the latest technology, we provide the best solutions for all possible functions of geotextiles.

## Nonwoven process    Woven process

Starting with polypropylene granules,

we extrude endless synthetic filaments. After stretching and shrinking, these filaments are cut into fibres.

These fibres are then deposited in layers by a crosslapper.

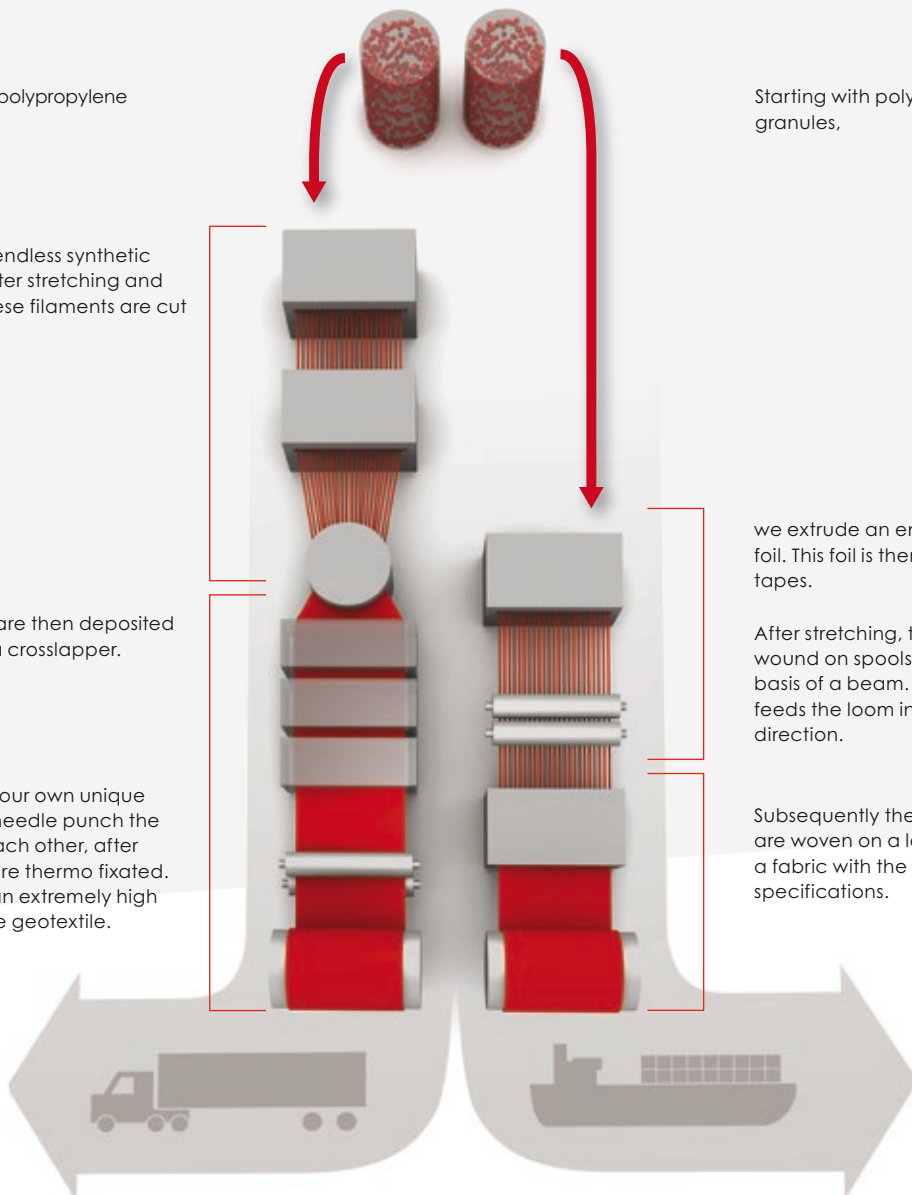
By means of our own unique process we needle punch the layers into each other, after which they are thermo fixated. The result is an extremely high performance geotextile.

Starting with polypropylene granules,

we extrude an endless synthetic foil. This foil is then cut into fine tapes.

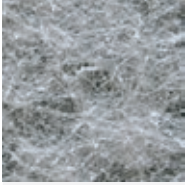
After stretching, the tapes are wound on spools that form the basis of a beam. That beam feeds the loom in the machine direction.

Subsequently the tapes are woven on a loom to a fabric with the desired specifications.



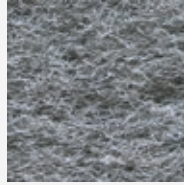
# Nonwoven Geotextile

## NW Thermally Bonded Nonwoven Geotextiles



Produced by applying mechanical and thermal bonding processes. NW has the highest tensile strength of the range and is used primarily for lightweight separation and filtration. Its excellent hydraulic properties are ideal for use in filtration applications. Typical uses include the encapsulation of a trench drain.

## VNW Nonwoven Needle Punched (Colored) Geotextile



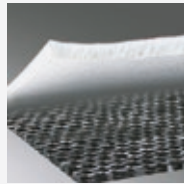
Produced by needle punching colored polypropylene fibres. The range varies from 200 to 2,000 g/m<sup>2</sup>. VNW is used for protection of membranes, as a component for drainage composites, or as a component for erosion control composites.

## SNW Superior Needle Punched Nonwoven Geotextiles



Produced in a manner similar to NW, SNW offers extraordinary properties for its very low weight. SNW is used primarily in circumstances that require both high tensile strength and elongation. Typical areas of application include membrane protection in reservoirs and landfills.

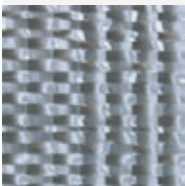
## LG Geocomposites



For the production of LG, woven and nonwoven geotextile are needle punched together. This process combines the properties of the two types in a single layer. These products are used in situations that require a high tensile strength as well as extreme protection.

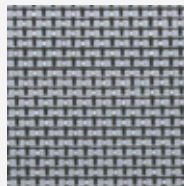
# Woven Geotextile

## SG Lightweight 'Standard Grade' Woven Geotextile



These lightweight, woven geotextiles from 65 to 250 g/m<sup>2</sup> are used primarily for separation. For example, SG prevents good quality sand or granules from mixing with underlying soil. It is used for the construction of roads, parking lots and airport runways.

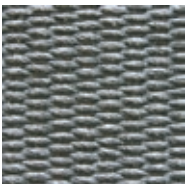
## HF 'High Flow' Woven Geotextile



Thanks to their specific structure, HF geotextiles have high permeability. This quality is very important for erosion control and infiltration applications. Typical applications include:

- As an under layer for concrete revetment blocks or between dissimilar layers of quick draining granular fill consisting of fine sand and rounded gravel.
- The envelopment of infiltration crates or tubes for rainwater management.

## SG Heavyweight 'Standard Grade' Woven Geotextile



These heavyweight, woven geotextiles vary from 250 to 600g/m<sup>2</sup> and they possess tensile strengths up to 200 kN/m and above. Heavyweight SG is used in heavy load circumstances, such as temporary basal reinforcement, coastal reinforcement and soil stabilization.

## HS 'High Strength' Woven Geotextile



The polyester wovens have a very high tensile strength of up to 600 kN /m. This strength and their very low stretch make them ideal for situations where:

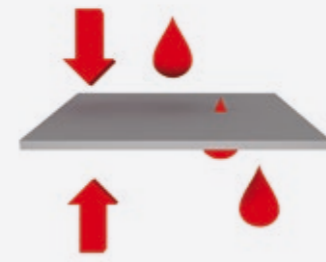
- Reinforcement of the ground is essential.
- The construction of very steep, or even vertical, slopes with different types of soil is required.

# Use of Geotextiles



## 1 Erosion control

In erosion control, the geotextile protects soil surfaces from the tractive forces of moving water or wind and rainfall erosion.



## 2 Filtration

The use of geotextiles in filter applications is probably the oldest, most widely known, and most used function of geotextiles. The geotextile is used to prevent fine soil particles from moving with the water flow normal to the plane.



## 3 Protection

A geotextile can be used as a protective layer against mechanical damage during installation and after the completion of a particular construction project. It will help prevent the puncturing of geomembranes used in constructions such as tunnels, landfills or reservoirs.



## 4 Drainage

When functioning as a drain, a geotextile acts as a conduit for the movement of liquids or gasses in the plane of the geotextile. Relatively thick nonwoven geotextiles are the products most commonly used. Selection should be based on transmissivity, which is the capacity for in-plane flow.



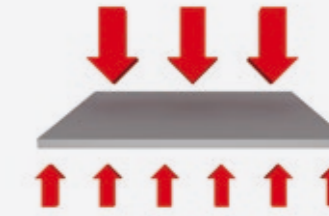
## 5 Stress relief

The geotextile provides a stress-relieving interlayer between the existing pavement and the overlay that reduces and retards reflective cracks under certain conditions. It also acts as a moisture barrier to prevent surface water from entering the pavement structure.



## 6 Reinforcement

The geotextile interacts with soil through friction or adhesion forces to resist tensile or shear forces. To provide reinforcement, a geotextile must have sufficient strength, low elongation and low creep to avoid movement of the structure.



## 7 Separation

Separation is the process of preventing two dissimilar materials from mixing. In this function, a geotextile is most often required to prevent the undesirable mixing of fill and natural soils or of two different types of fill.



# Value chain

## World player with local market presence

- Most complete product range
- Vertically integrated production - from raw material to finished stock
- Strong logistic service and stock supported key products to meet market needs
- Health and Safety from production right through delivery on site as an absolute priority
- Over 30 years of experience in a constantly evolving hi-tech market:
  - > Innovation driven
  - > Project specific engineered solutions

## Advantages of Bontec Geotextiles

- Intelligent installation techniques
- Cost and energy saving
- Increased life-span of projects



#### PRODUCTION SITES

- Belgium - Zele & Lokeren
- China - Yizheng
- Germany - Groß Ippener & Obernburg
- Hungary - Tiszaújváros
- Saudi-Arabia - Yanbu
- The Netherlands - Arnhem & Emmen
- USA - Asheville, NC

Development Centers in the Netherlands, Belgium and USA  
Sales offices in UK, France and China



#### PRODUCT PORTFOLIO

**Geotextiles**  
**Geocomposites**  
**Geogrids**  
**Geocells**  
**Vertical Drains**  
**Erosion Control Systems**  
**Construction Fibres**

Your local distributor:

**GreenScape Ltd.**

#### Contact Details:

Malik Mahmood Ring Road, Opposite to German Village  
Sulaymaniyah  
Kurdistan Region  
Iraq

For Landscape & Geosynthetic Engineering

Tel: +964 (0) 53 3195567  
Mob: +964 (0) 770 123 3588  
Mob: +964 (0) 770 191 6556  
Mob: +964 (0) 750 335 0735  
Email: [info@greenscape-ltd.com](mailto:info@greenscape-ltd.com)  
Home Page: [www.greenscape-ltd.com](http://www.greenscape-ltd.com)



#### Bonar N.V.

Industriestraat 39 / 9240 Zele  
Belgium  
T +32 52 45 74 11 / F +32 52 45 74 95  
[info@bonar.com](mailto:info@bonar.com) / [www.bonar.com](http://www.bonar.com)

#### Bonar B.V.

P.O. Box 9600 / 6800 TC Arnhem  
The Netherlands  
T +31 85 744 1200 / F +31 85 744 1210  
[info@bonar.com](mailto:info@bonar.com) / [www.bonar.com](http://www.bonar.com)

#### Bonar Inc.

P.O. Box 1057 / Enka, NC 28728  
United States of America  
T +1 828 665 5000 / F +1 828 665 5065  
[info-usa@bonar.com](mailto:info-usa@bonar.com) / [www.bonar.com](http://www.bonar.com)

#### Copyright

© 2013 Bonar B.V.



**Bonar**  
partners in performance

[www.bontec.be](http://www.bontec.be)