



GreeScape
Vertical Greening



Green Wall Screen

The overall shape is simple and generous, suitable for different places, environments, themes and functions.

Item: SL-XQ3319

Size: Length 330mm X Width 190mm X Depth 140mm

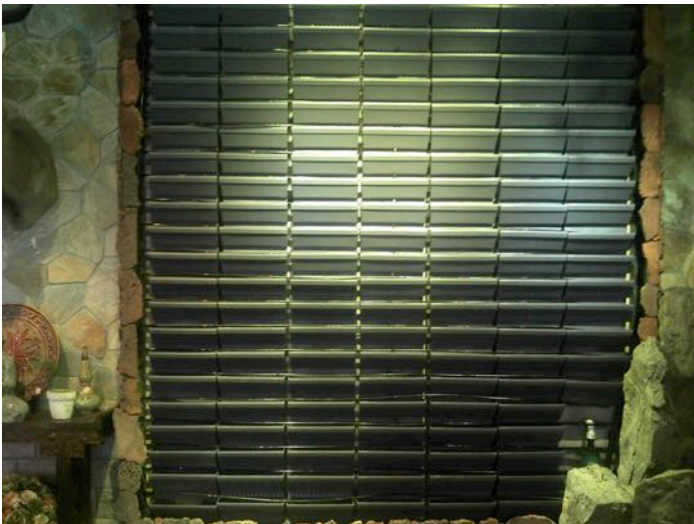
Color: Blue and Grey

Each tray can grow 2-4 herbs, 24pieces / square meter

1 tray set consists of 1 planter + 1 water-proof panel + 1pcs cotton tape



Green Wall Screed front view



Product Features

1) Safety and Reliability

The main material is high density PP, with addition of anti-aging agents and UV absorbers. Better adapted to a variety of indoor and outdoor harsh environment. More than three times mechanical strength analysis and designed with special fixed hooks and fixing holes, fixed safe and reliable, even in strong winds outdoor environment, no need afraid. Good appearance, reliable quality and safety.

2) Energy saving and Eco-Friendly

Raw material HDPP is food grade, toward the side of the wall is plastic. So the wall can keep dry. Planter can collect rainwater, favorable plant growth and energy conservation.

3) Maintainability

At the top of each planter connected to the water pipe, when the top first row of storage tank is full, the water will turn down to the next row. The absorbent cotton will absorb the water to the growing medium, not only solved the irrigation, fertilization (Liquid fertilizer) problems, as well as lower maintenance costs. Since the container is combination type, it is very convenient to disassemble when replace plant and container.

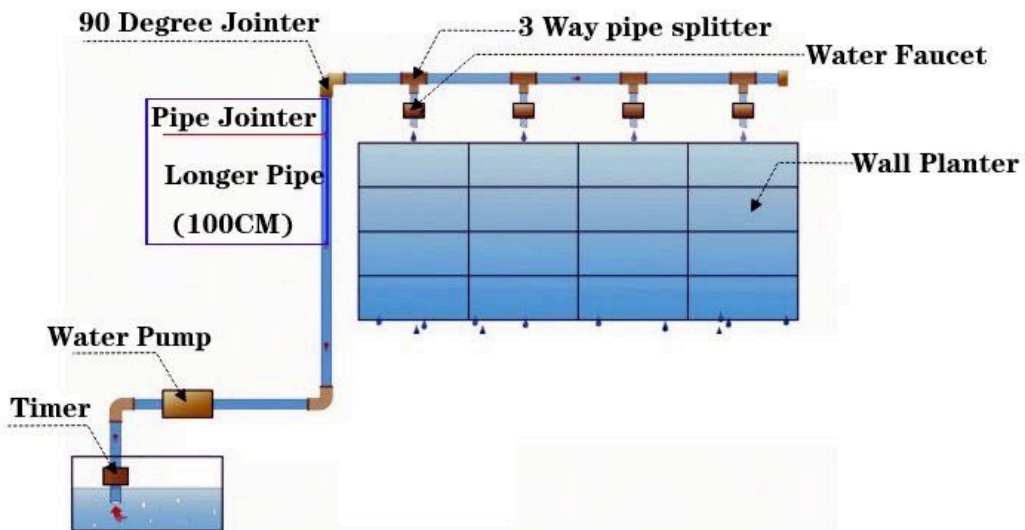
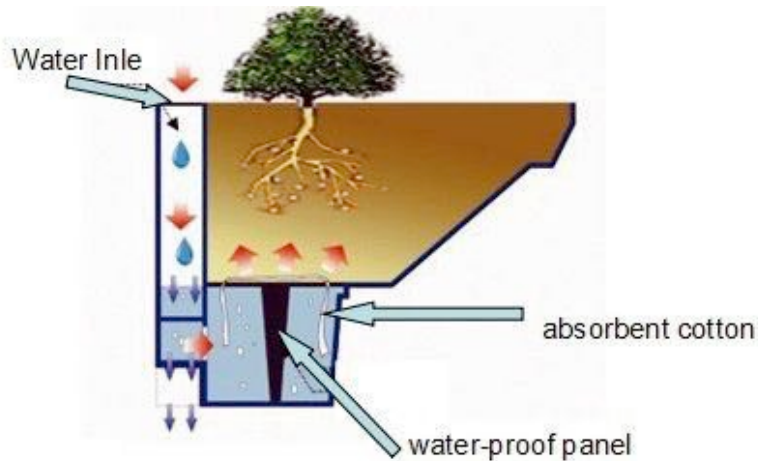
4) Structure

- a. Length: 330mm, width: 190mm, height: 140mm, after overlap the actual exposed height of each planter is 120mm, narrow space between layers that planters can well cover the pot body. With same plant, after planting effect will be more ideal with this planter, very suitable for indoor green wall.
- b. After mounting, the distance between flower pot edge and wall is about 200mm (Not including the plant crown).
- c. At the bottom of the growing medium there are water-proof panel, below the panel is storage tank. Through absorbent cotton water and fertilizer absorbs from the storage tank to the media. The depth of the storage is 45mm, storage water up to 12 Litres.
- d. There are small drainage holes near the water-proof panel, for extra water drainage and planter aeration.



Irrigation System

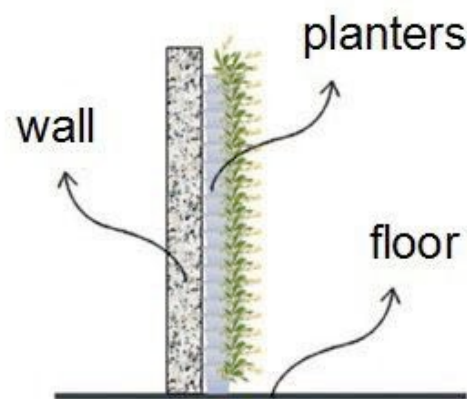
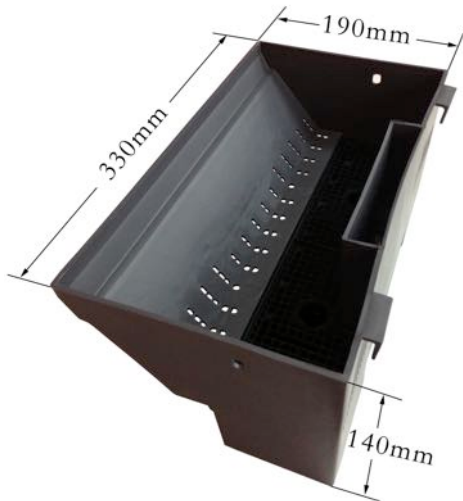
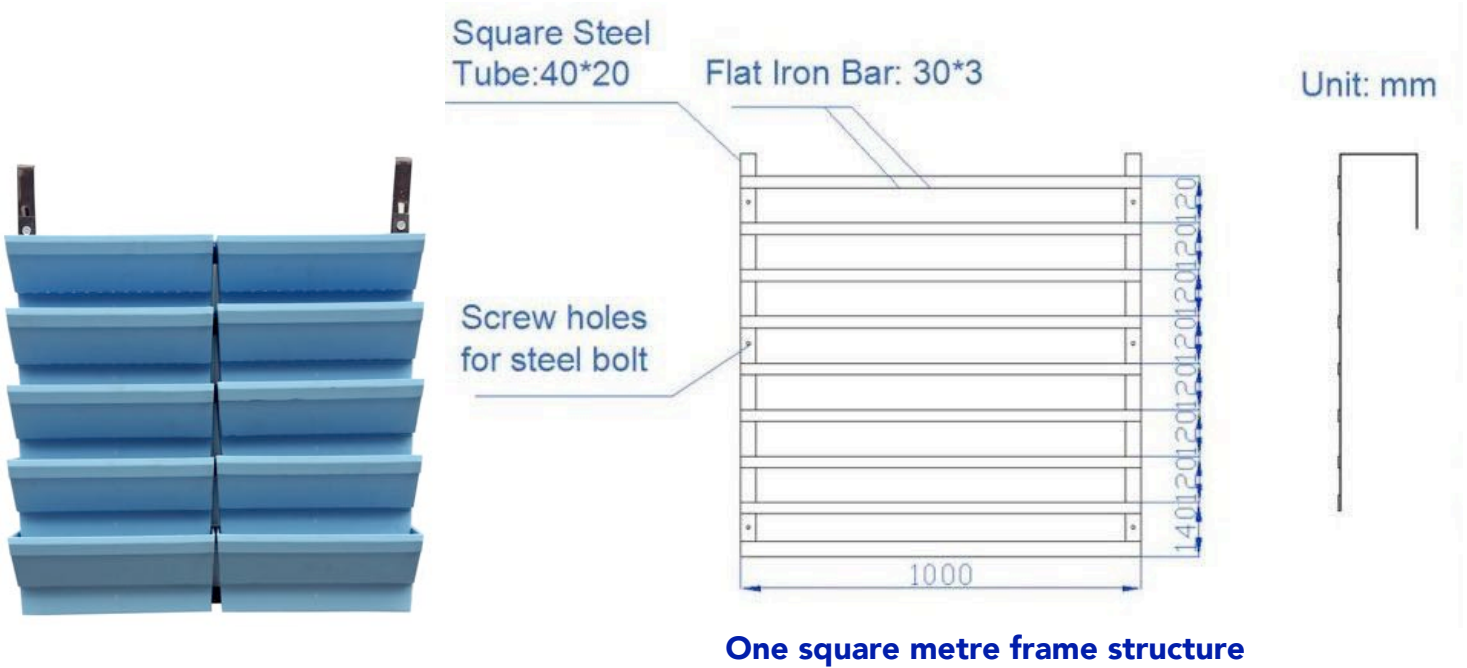
With self-watering irrigation system, through the main water pipe and flow control valve, water flow from the top to each planter's storage tank. The water drainage from the top planters is then collected and transferred to the next planter. At the bottom layer there is a water sink for excess water drain away.



Irrigation System Schematic

Installation

The steel construction are made of galvanize square steel tube and flat iron,. The distance between flat iron are about 12cm, after welding the steel construction and wall were fixed with steel bolt. The space between planter edge and wall is about 20cm(not including the planter crown). Assemble from the bottom to top, the steel construction size can customized according to the wall height, wall material, wall pressure ability and other construction requirement.







GreeScape Vertical Greening



Malik Mahmood Ring Road
Opposite to German Village
Sulaymaniyah City
Kurdistan Region
Iraq

Tel: +964 (0) 53 319 5567
Mob:+964 (0) 7701916556
+964 (0) 7701233588
+964 (0) 750 3350735
Email: info@greenscape-ltd.com

www.greenscape-ltd.com