



Engineering a better solution

Geotechnical Design, Supply and Construction Specialists



Eskmills, Gabions



Loadman Street, Newcastle,
Timber Crib



Balerno, Gabions



Center Parcs, Woburn,
Timber Crib

Our Philosophy

Maccaferri Construction provides a fully indemnified and managed design, supply and installation package for your project that is backed by the Maccaferri organisation's global philosophy; "Engineering a better solution".

With 50 years expertise in retaining wall and reinforced soil systems, Maccaferri's client list includes the most respected Civil Engineering Contractors, National and Local Authorities, Commercial and Housing Developers, Infrastructure Owners and Operators.

Sectors

Maccaferri Construction operates across a broad spectrum of industry sectors, including

- Rail
- Leisure
- Marine
- Landfill
- Housing
- Utilities
- Infrastructure
- Erosion Protection
- Commercial/Retail
- Schools/Colleges/Universities
- MOD
- Hospitals
- Industrial

Our Service

In addition to the full Design, Supply and Install package, Maccaferri Construction also operates under all current forms of tender including NEC 3 and ECI formats. Maccaferri Construction installs an extensive list of products which allows the company to focus on providing the correct solution for clients.

Maccaferri Construction prides itself in using high quality materials to achieve aesthetic solutions, whilst using its engineering knowledge to ensure value for money.

Application Areas

Maccaferri Construction provides professionally indemnified design and construction solutions through its team of specialists covering:

- Retaining structures
- Reinforced soil slopes/walls
- Erosion protection systems
- Basal reinforcement



Rotherham Cemetery,
Gabions



Lochside, Dumfries,
Timber Crib



Northolt Embankment,
Ruislip, Gabions



Langside College, Glasgow,
Gabions

Mass Gravity Structures

Mass Gravity retaining walls often provide a cost effective alternative to piled and concrete solutions.

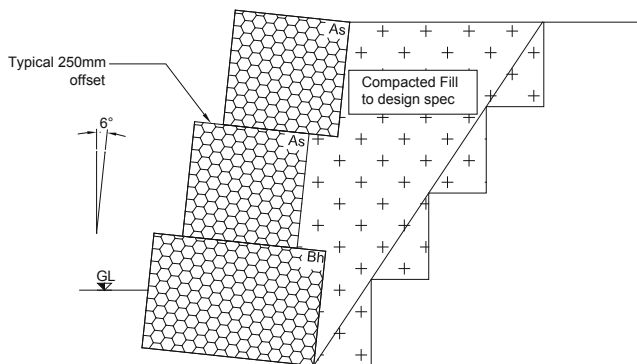
Systems include:

- Gabions

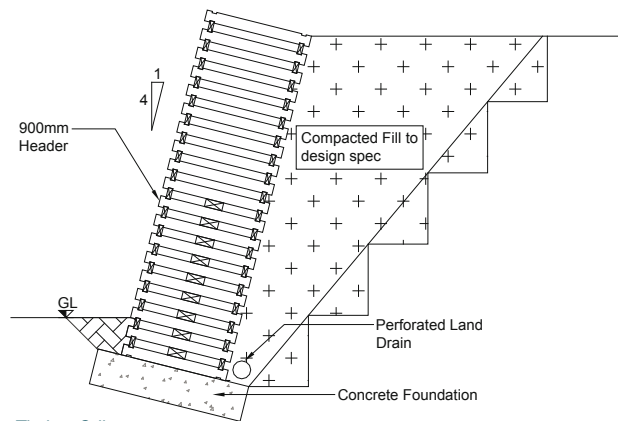
BBA certified double twist Gabions and welded mesh Gabions. These can be filled with locally sourced infill stone which is hand placed to ensure a pleasing aesthetic is achieved.

- Timber Crib

Supplied from sustainable sources with FSC certification to ensure chain of custody. The Timber Crib system is a cost effective method of retaining cutting.



Gabion
Retaining Wall



Timber Crib
Retaining Wall



Napier University, Edinburgh
Gabions



Loadman Street, Newcastle
Timber Crib



Langtrees, Liverpool,
Gabions



Kidbrooke Village,
London, Gabions



Wind Farm, Inverary,
Gabion Terramesh®



Glencorse Water Treatment
Works, Gabion Terramesh®



Duncans Road, Lisburn,
Green Terramesh®



A5130 Improvements, Milton
Keynes, Green Terramesh®

Reinforced Soil

With a wide range of reinforced soil systems, Maccaferri Construction can provide the most cost effective solution with the finish required.

Systems include:

- **Gabion Terramesh®**

BBA certified Gabion faced reinforced soil system. Offers a vertical or stepped face which is cost effective and rapid to install.

- **Green Terramesh®**

BBA certified reinforced soil system for slopes up to 70 degrees. Manufactured with an integral sacrificial formwork that offers a high standard of finish compared to more traditional green faced systems. A wedge of topsoil is placed behind the front face to facilitate a vegetative green finish.

- **MacWall™**

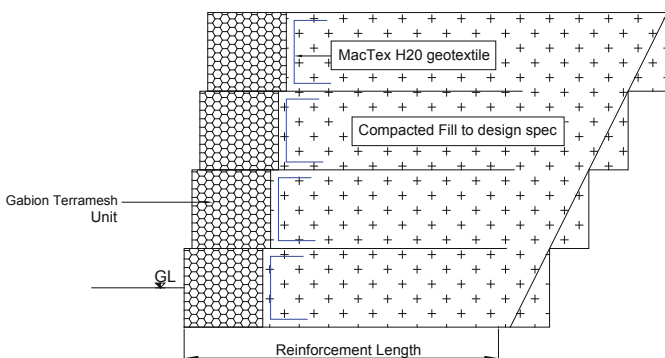
Engineered reinforced segmental block retaining wall system of dry laid concrete blocks in combination with Paragrid soil reinforcement geogrids. Blocks are available in a range of colours to compliment adjacent finishes. BBA certified blocks are available.

- **MacRes®**

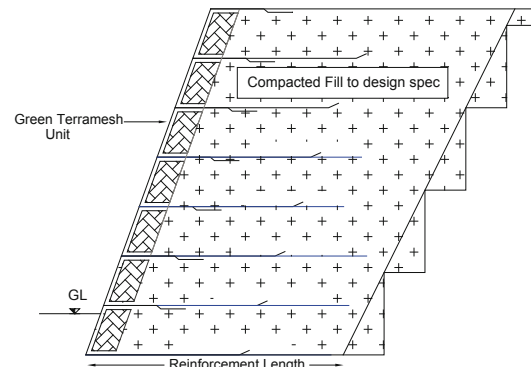
BBA certified Reinforced soil system with concrete panel facing. Available with polymer reinforcement for contaminated or aggressive backfills. A range of form liners are available to provide a variety of finishes.

- **Wrap Faced Reinforced Soil Slopes**

We offer a range of BBA Certified geogrids to suit many soil types, often reusing site won fills to create reinforced slopes and bunds.



Gabion Terramesh Units
Reinforced Soil Wall



Green Terramesh® Units
Reinforced Soil Slope



Sadlers Farm junction improvements, MacRes®



Lincoln WTE, MacRes®



Sadlers Farm Junction Improvements, MacRes®



Maryhill Locks, Glasgow, MacRes®



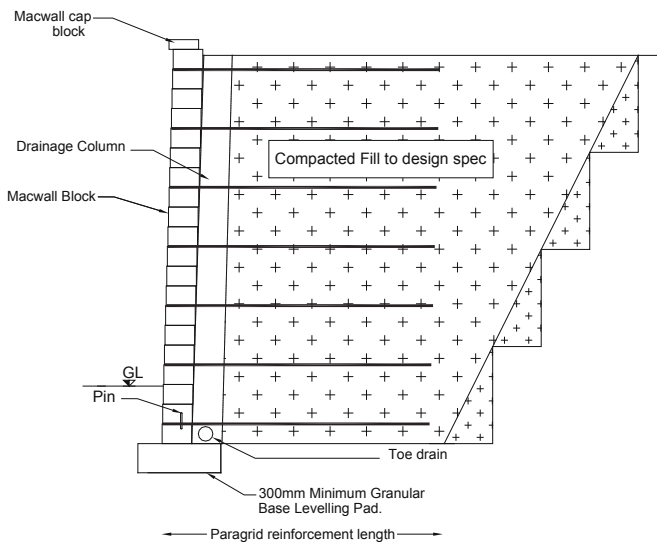
BMW Cowley, MacWall™



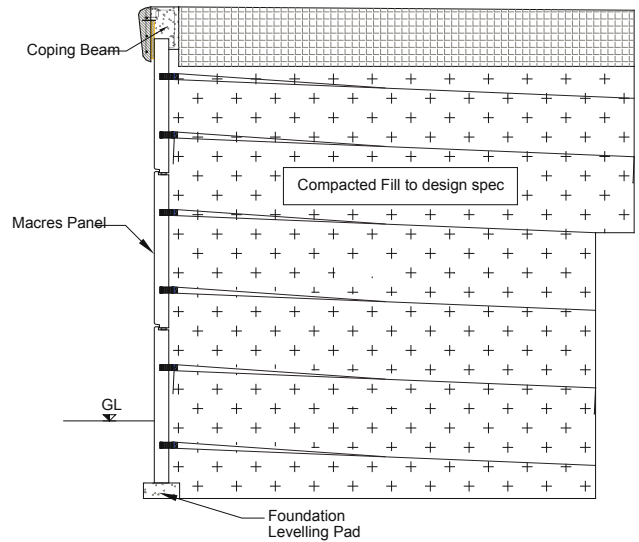
Hackbridge, London, Green Terramesh®



Balerno, Edinburgh, MacWall™



MacWall™
Reinforced Soil Wall



MacRes®
Reinforced Soil Wall

Prefilled Gabions



Prefilled Gabion Unit



DIRFT, Daventry, Loading of Prefilled Gabions

Prefilled Gabions are manufactured for use in situations where time and/or access is problematic. Maccaferri Construction keeps a stock of prefilled units and can also manufacture on site and in local quarries to meet project requirements.

Emergency Response Capability



Dalguise, Perthshire, Installation of Prefilled Gabions



Airdrie Bathgate Rail Line, Airdrie, Installed Prefilled Gabions

With a network of specialists throughout the UK and Ireland, Maccaferri Construction can respond quickly to the site of disrupted infrastructure arising from landslips and/or the effects of flooding.

GeoMac®



A90, Portlethan during construction Aberdeen, GeoMac®

BBA certified Reno mattresses filled with a combination of stone and topsoil and topped with an erosion mat to create a contained vegetated slope.



A90, Portlethan post construction, Aberdeen, GeoMac®

GeoMac® can be fastened to soil nailed cuttings, or pinned to shallower slopes. The system has been approved by Transport Scotland.

Erosion Protection



Saucel Street, Paisley, Erosion Protection, post construction

Maccaferri Construction installs a wide range of erosion control products including concrete and Gabion mattresses, Geocells, polymer and biodegradable Geomats. These products are often combined to create bespoke solutions.



Inveresk, Midlothian, Erosion Protection, post construction



Anchor Mills, Paisley, Erosion Protection

Cladding



Edinburgh University, Gabion cladding



St Annes, Nottingham, Gabion cladding



Glencloy Road, Glasgow, Gabion Cladding

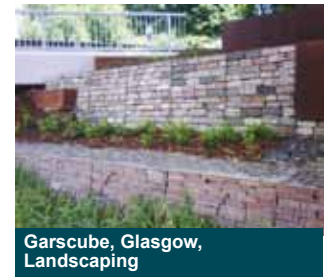
Landscaping



Brunel University, Landscaping



Clifton Campus, Nottingham, Landscaping



Garscube, Glasgow, Landscaping

Maccaferri Welded Gabions fabricated to create cladding and trapezoidal units in architectural applications.

Gabion units incorporating architectural cropped stone retaining site won fill to create planting areas.

Free Standing



BBC Studios, Cardiff, Free standing



Kidderminster Crematorium, Free standing & constructed on radius



Inverness Pharmaceuticals, Inverness, Free standing

S.U.D.S



Prestwick during construction, SUDS



Prestwick 2 months after completion, SUDS

Maccaferri welded Gabions incorporating structural steel reinforcement to create acoustic walls, visual screens and containment barriers.

Gabion units and Terramesh® Systems integrated with erosion products to create channels and ponds.

Health & Safety Commitment



The health and safety of everyone involved in, and affected by Maccaferri operations is the company's number-one priority. Ensuring that employees are safe throughout the working day is central to the sustainability of the business. Maccaferri empowers its employees to place their personal safety and that of their colleagues above all other priorities to enable safe delivery of projects.

Environmental Commitment



Maccaferri Construction solutions generate minimal waste, and the company endeavours to use locally sourced labour, plant and materials on all projects. The company aims to reuse site won materials wherever possible.



Contact us:

Maccaferri Construction
Head Office
7600 The Quorum
Oxford Business Park North
Garsington Rd, Oxford
OX4 2JZ

T: 01865 770555
F: 01865 774550
E: enquiries@macconstruct.co.uk
W: www.macconstruct.co.uk

Scotland Office
T: 01738 492620
F: 01738 492639
E: enquiries@macconstruct.co.uk
W: www.macconstruct.co.uk

7b Weavers Court Business Park
Linfield Rd
Belfast
BT12 5GH

T: 02890 262830
F: 02890 262849
E: enquiries@macconstruct.co.uk
W: www.macconstruct.co.uk



- Area Headquarter
- Factories
- Local Offices

Maccaferri Construction is part of the Maccaferri Industrial Group, which provides complete vertical integration through research and development, manufacture, design, supply and installation.

Iraq Partner:

GreenScape Ltd.

For Landscape & Geosynthetic Engineering

www.greenscape-ltd.com



Contact Details:

Malik Mahmood Ring Road, Opposite to German Village
Sulaymaniyah
Kurdistan Region
Iraq

Tel: +964 (0) 53 3195567

Mob: +964 (0) 770 123 3588

Mob: +964 (0) 770 191 6556

Mob: +964 (0) 750 335 0735

Email: info@greenscape-ltd.com

Home Page: www.greenscape-ltd.com