

Manufacturers, Formulators and Suppliers of Quality Resin Surfacing Systems since 1980



Resin Bound and Resin Bonded Surfacing Solutions

Introduction

About Addagrip

Addagrip, part of the Terraco Group of Companies, has been involved in the external decorative resin surfacing market for over 30 years. During that time we have established ourselves as a leading manufacturer, formulator and specifier of quality resin systems with a network of approved installers throughout the UK and overseas.

Addagrip's philosophy is to create and develop a wide range of decorative and hard wearing surfacing solutions. We work with Architects, Designers, Specifiers and our Installer network, to provide a high quality product range and sample service.



Nationwide Approved Contractor Network

To maintain the quality of installation, the Addagrip range of Resin Bound and Resin Bonded Surfacing Systems are only installed by our nationwide network of specialist approved contractors. This ensures that our high installation standards are maintained to provide optimum product performance and life span. We have a thorough training programme and run additional courses for our existing contractors on new products and specialist applications.

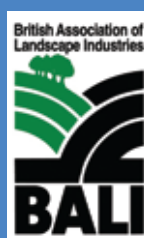
Contact us to discuss your project and we will ensure that we provide you with details of the most relevant contractors based on individual project needs and location.

Quality Service

Addagrip provide base build up detail for accurate specification and full technical support from our experienced team in the office. CPD presentations, technical datasheets and a library of case studies old and new are available on our website. We also pride ourselves in our prompt Sample Service and selection of Product Boards available for Architects and Specifiers.

Visit our website

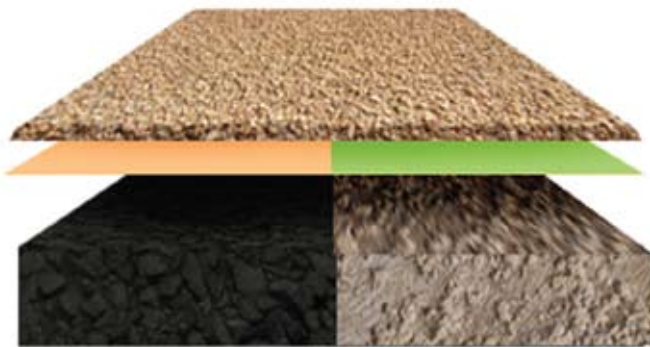
www.addagrip.co.uk



Resin Bound or Resin Bonded Surfacing ?	4
Application	5
Terrabase® Rustic Resin Bound Porous Surfacing	6-7
Addaset® Resin Bound Porous Surfacing	8-9
Addabound® Resin Bound Porous Surfacing	10-11
Terrabound® Resin Bound Porous Surfacing	12-13
Addacolor® Resin Bound Surfacing	14-15
Addastone TP® Resin Bound Tree Pit	16-17
Addastone® Resin Bonded Surfacing	18-19
Reference Projects	20-22

Resin Bound or Resin Bonded Surfacing?

The most common question that we are asked is to clarify the difference between Resin Bound and Resin Bonded surfacing products:



Resin Bonded Surfacing
(Non-Porous)



Resin Bound Surfacing
(Porous)

Resin Bonded surfaces are produced from a graded aggregate applied directly on to a natural or coloured resin, creating a textured surface.

Resin Bonded surfaces are not porous and some loose aggregate will remain.

Regular sweeping is required after installation.

Addagrip Resin Bonded surfacing is fast to install, typically up to 1000 sqm per day in suitable conditions and will be ready for sweeping in 6-8 hours. Allow 4 hours for pedestrian trafficking and 24 hours for vehicular traffic.

Typical life span will be between 5 -15 years dependant on usage and aggregate selection.

Resin Bound porous surfaces are produced from a blend of graded aggregates mixed with a clear resin and trowelled to a smooth level finish.

Resin Bound is a fully bound porous system with no loose aggregates.

Low maintenance.

Addagrip Resin Bound finishes are generally installed much faster than other paving options, typically up to 300 sqm per day in suitable conditions and can be ready for pedestrian trafficking in 4-6 hours of installation and 12-18 hours for vehicular traffic.

Typical life span will be in excess of 15 years plus dependant on usage.



Application

Resin Bound Porous Surfacing can be applied on to:

Asphalt - the ideal base as it is suitable for all types of trafficking subject to build up and offers flexibility to help prevent cracking caused by movement. Application to existing asphalt surfaces can be carried out subject to suitability. Freshly laid asphalt should ideally be allowed to cure for a minimum of 7 days prior to installation of the Resin Bound surface.

Concrete - also suitable for all types of trafficking subject to build up, however, movement joints in the concrete must be reflected through the Resin Bound finish. Freshly laid concrete should be allowed to cure for a minimum of 14 days.

Compacted crushed rock - Resin Bound surfacing can be applied on to a well compacted base for pedestrian and light trafficking schemes. In this instance, the Resin Bound finish should be applied at a minimum depth of 35mm.

For typical sub-base requirements for our Resin Bound range visit www.addagrip.co.uk

Resin Bonded Surfacing can be applied on to:

Asphalt - the ideal base as it is suitable for all types of trafficking subject to build up and offers flexibility to help prevent cracking caused by movement. Application to existing asphalt surfaces can be carried out subject to suitability. Freshly laid asphalt should be allowed to cure for a minimum of 7 days prior to installation of the Resin Bonded surface and sealed with Addacryl.

Concrete - also suitable for all types of trafficking subject to build up, however, movement joints in the concrete must be reflected through the Resin Bonded finish. Freshly laid concrete should be allowed to cure for a minimum of 28 days and EP Addastone Primer should be used to prime the surface after suitable preparation and prior to application of the Resin Bonded finish.

Timber - also suitable, however, all timber must be clean and dry prior to priming with EP Addastone primer.

Suggested product use

	Resin Bound Terrabase Rustic	Resin Bound Addaset Addabound Terrabound	Resin Bound Addacolor	Resin Bonded Addastone	Resin Bound Addastone TP Tree Pit
Suitable	██████████	██████████	██████████	██████████	██████████
Not suitable	██████████	██████████	██████████	██████████	██████████
Car Parks	██████████	██████████	██████████	██████████	██████████
Access Roads	██████████	██████████	██████████	██████████	██████████
Driveways	██████████	██████████	██████████	██████████	██████████
Courtyards	██████████	██████████	██████████	██████████	██████████
Pathways	██████████	██████████	██████████	██████████	██████████
Patios	██████████	██████████	██████████	██████████	██████████
Bridges (Steel, Wood, Concrete)	██████████	██████████	██████████	██████████	██████████
Swimming Pool Surrounds	██████████	██████████	██████████	██████████	██████████
Playgrounds	██████████	██████████	██████████	██████████	██████████
Logos	██████████	██████████	██████████	██████████	██████████
Tree Pits	██████████	██████████	██████████	██████████	██████████

Resin Bound Rustic Porous Surfacing



Terrabase Rustic Resin Bound porous surfacing is based on a blend of natural aggregates.

Application is by hand to create a permeable and seamless natural rustic finish.

Terrabase Rustic provides a hard wearing SuDS compliant surface.

Installation can be achieved without the need for an asphalt or concrete base.

Terrabase Rustic is an innovative patented paving system that provides a decorative and natural rustic looking permeable surface, suitable for pedestrian footpaths and areas subject to occasional trafficking by light vehicles.

Terrabase Rustic can be applied directly on to most suitable surfaces and gradients, and can potentially even be installed directly on to the ground with no or minimum digging or edging required. An ideal replacement or overlay system for self-binding surfaces such as 'Hoggin' as it is fully bound and will not be washed away.

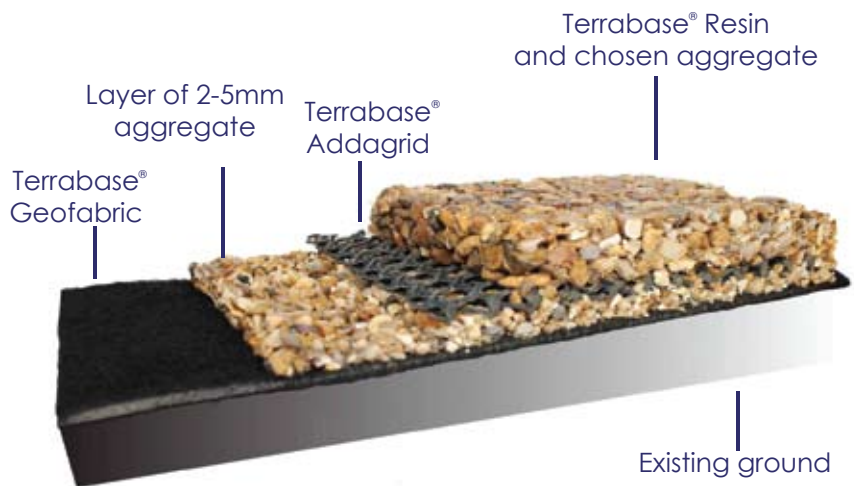
The innovative structured build up ensures a SuDS compliant surface that allows water to drain through the product. Maximum porosity is achieved when applied directly on to a compacted MOT Type 3 sub-base or similar installed prior to application.



Resin Bound Rustic Porous Surfacing



**SuDS
Compliant
Porous
Paving**



Benefits

- Provides a natural looking seamless finish offering strength and durability
- Requires no large machinery to install
- No asphalt or concrete sub-base requirement
- Minimum disruption
- The edging can be part of the product - no additional edging requirement
- Fast installation
- SuDS compliant porous surface

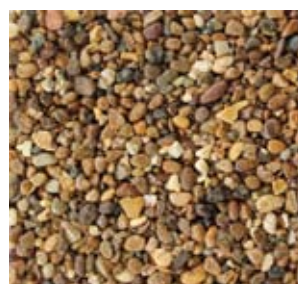
terrabase® rustic



Terrabase Rustic
Beach



Terrabase Rustic
Gold



Terrabase Rustic
Oak



Terrabase Rustic
Tweed

Resin Bound Porous Surfacing



Addaset Resin Bound porous surfacing is based on a blend of natural aggregates.

Application is by hand or power trowel to create a permeable and smooth finish.

Addaset provides a hard wearing surface that is UV stable, oil resilient and resistant to cracking.

Fast installation with up to 300 sqm of seamless surfacing applied per day.

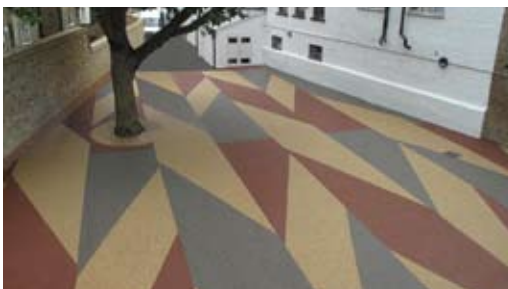
The Addaset Resin Bound Surfacing System provides a smooth, hard wearing and low maintenance porous/ semi-porous surface using a range of natural and recycled aggregates.

The finished surface is flexible and resistant to cracking and can be applied on to asphalt, concrete or other stable substrates.

Benefits

- Seamless finish
- SuDS compliant
- No loose aggregate
- UV stable
- Fast installation
- Low maintenance
- Hard wearing

**SuDS
Compliant
Porous
Paving**



Chocolate Buff
3,6 & 10mm



Dorset Gold
6 & 10mm



Lucerne Silver
3,6 & 10mm



Rhine Gold
6 & 10mm



Trent
3,6 & 10mm



Scandinavian
Pearl 3 & 6mm

Resin Bound Porous Surfacing



INSTALLATION

Addaset can be applied on to the following bases:

Asphalt - the ideal base as it is suitable for all types of trafficking subject to build up and offers flexibility to help prevent cracking caused by movement. Application to existing asphalt surfaces can be carried out subject to suitability.

Concrete - also suitable for all types of trafficking subject to build up, however, movement joints in the concrete must be reflected through the Resin Bound finish. Freshly laid concrete should be allowed to cure for a minimum of 14 days.

Compacted crushed rock - Resin Bound surfacing can be applied on to a well compacted base for pedestrian and light trafficking. In this instance, the Resin Bound finish should be applied at a minimum depth of 35mm.

Typical sub-base requirements can be found on our Website www.addagrip.co.uk.

SuDS (Sustainable Urban Drainage Systems)

Addaset is porous, allowing water to permeate/percolate through the surface and beyond when a suitable base build-up configured for SuDS has been installed.

SuDS porous/semi porous • Durable • UV stable •
Low maintenance • Anti-slip • Wheelchair friendly



Yellow Cream
3 & 6mm



Autumn Gold
3 & 5mm



Midnight Grey
3 & 6mm



Terracotta
3 & 6mm



Tuscan Pebble
6mm



Maple Gold
6 & 10mm

Resin Bound Porous Surfacing (with recycled content)



Addabound Resin Bound porous surfacing incorporates a minimum 25% recycled content, developed due to customer demand.

Permeable surfacing to prevent standing water when used over a suitable permeable base.

Application by hand or power trowel to create a permeable and smooth finish that is hard wearing and UV stable.

The Addabound range of decorative porous surfacing incorporates our latest UV stable resin technology and is available in a range of natural aggregate colours with a recycled content ranging from 25% aggregate and filler up to 100% on some colours.

Addabound is suitable for driveways, footpaths, pedestrian precincts, playgrounds, swimming pool surrounds, patios, car parks and access roads.



**Minimum
25%
Recycled
Content**



Ash
3mm



Oyster
6mm



Oyster
3mm



Eco Ruby
6mm



Starlight
6mm



Dune
3mm

Resin Bound Porous Surfacing (with recycled content)



**SuDS
Compliant
Porous
Paving**

SuDS (Sustainable Urban Drainage Systems)

Addabound is porous, allowing water to permeate/percolate through the surface and beyond when a suitable base build-up configured for SuDS has been installed.

See our website for details www.addagrip.co.uk

Benefits

- Seamless finish
- SuDS compliant
- No loose aggregate
- UV stable
- Fast installation
- Low maintenance
- Hard wearing



SuDS porous/semi porous • Durable • UV stable • Low maintenance • Anti-slip • Wheelchair friendly



Summer Gold
5mm



Natural Beach
3mm



Golden Beach
10mm



Golden Beach
6mm



Sunburst
6mm



Rustic Bronze
6mm

Resin Bound Porous Surfacing



Terrabound Resin Bound porous surfacing is based on a select and limited blend of natural aggregates.

The Terrabound must be applied in temperatures above 7°C.

Fast installation with up to 300 sqm of seamless surfacing applied per day.

Low maintenance.

Application by hand or power trowel to create a permeable, smooth finish.

Terrabound Resin Bound Surfacing is our commercial grade resin bound surfacing system, introduced to provide a more cost effective solution for large and small projects.

Terrabound is available in a select range of natural aggregates and provides a seamless, porous, hard wearing, low maintenance and decorative surface.

The product is ideal for commercial projects including landscaping schemes, housing developments, parks, car parks, access roads and driveways.



Resin Bound Porous Surfacing



Chocolate Buff
3, 6 & 10mm



Trent
3, 6 & 10mm



Autumn Toffee
3 & 5mm



Chestnut Brown
6 & 10mm

**SuDS
Compliant
Porous
Paving**



Rhine Gold
6 & 10mm



Tuscan Pebble
6mm



Terracotta
3 & 6mm

SuDS (Sustainable Urban Drainage Systems)

Terrabound is porous, allowing water to permeate/percolate through the surface and beyond when a suitable base build-up configured for SuDS has been installed.

See our website for details www.addagrip.co.uk

SuDS porous/semi porous • Durable •
Low maintenance • Anti-slip • Wheelchair friendly

Resin Bound Coloured Surfacing



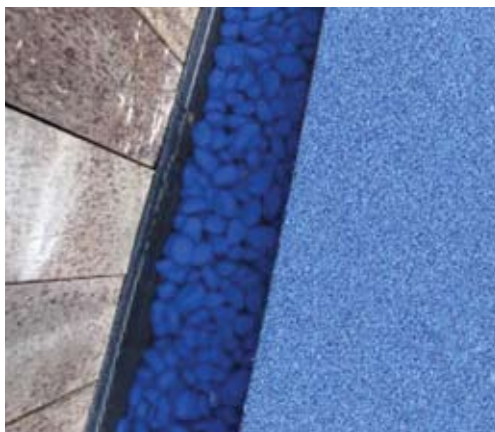
Addacolor Resin Bound surfacing is based on a high quality UV stable coloured quartz aggregate ideal for providing a decorative coloured surface.

A range of 12 standard colours are available. Bespoke colours can be supplied on request.

Fast installation with up to 300 sqm of seamless surfacing applied per day by hand or power trowel to create a smooth surface.

Addacolor retains all of the benefits of our standard resin bound paving and is ideally suited to those projects that require a splash of colour both inside and out.

Addacolor is UV stable and ideal for demarcation, logos, patterns and designs as well as regular projects associated with resin bound surfacing such as footpaths, playgrounds, swimming pool surrounds, courtyards and other pedestrian schemes.



Resin Bound Coloured Surfacing

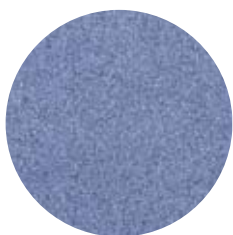


**Semi-porous • Durable • Colourful
Low maintenance • Anti-slip •
Wheelchair friendly**

Addacolor Resin Bound surfacing is available in a range of 12 standard colours. Bespoke colours can be supplied on request for those projects that require a specific colour.



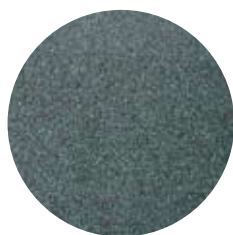
3mm Purple
AC-4001-3



3mm Blue
AC-022-3



3mm Green
AC-6018-3



3mm Green
AC-159-3



3mm Buff
AC-6011-3



3mm Brown
AC-8008-3



3mm Grey
AC-7003-3



3mm Black
AC-0101-3



3mm Red
AC-3020-3



3mm Blue
AC-7000-3



3mm Yellow
AC-1018-3



3mm Cloud
AC-9010-3

Resin Bound Porous Tree Pit Surfacing



Addastone TP Resin is normally mixed with a 6-10mm grade of washed, clean and dry aggregate to create a porous surface. It is ideal for tree pits and light use footpaths.

Installed at various depths from 25mm to 75mm on to a well compacted base.

A tree collar is recommended to be placed around the tree to allow for growth.

Suitable edging detail is required.

Addastone TP is designed to provide a practical and aesthetically pleasing porous paving system for tree pits, using a variety of natural or recycled aggregates.

Available in either Epoxy or a UV stable Polyurethane, the resin binder is mixed with our range of natural or recycled aggregate with a typical grading of 6-10mm.

The open texture achieved provides a highly porous resin bound surface allowing the tree roots access to both air and water penetration.



Rhine Gold
6-10mm



Trent Pea
6-10mm

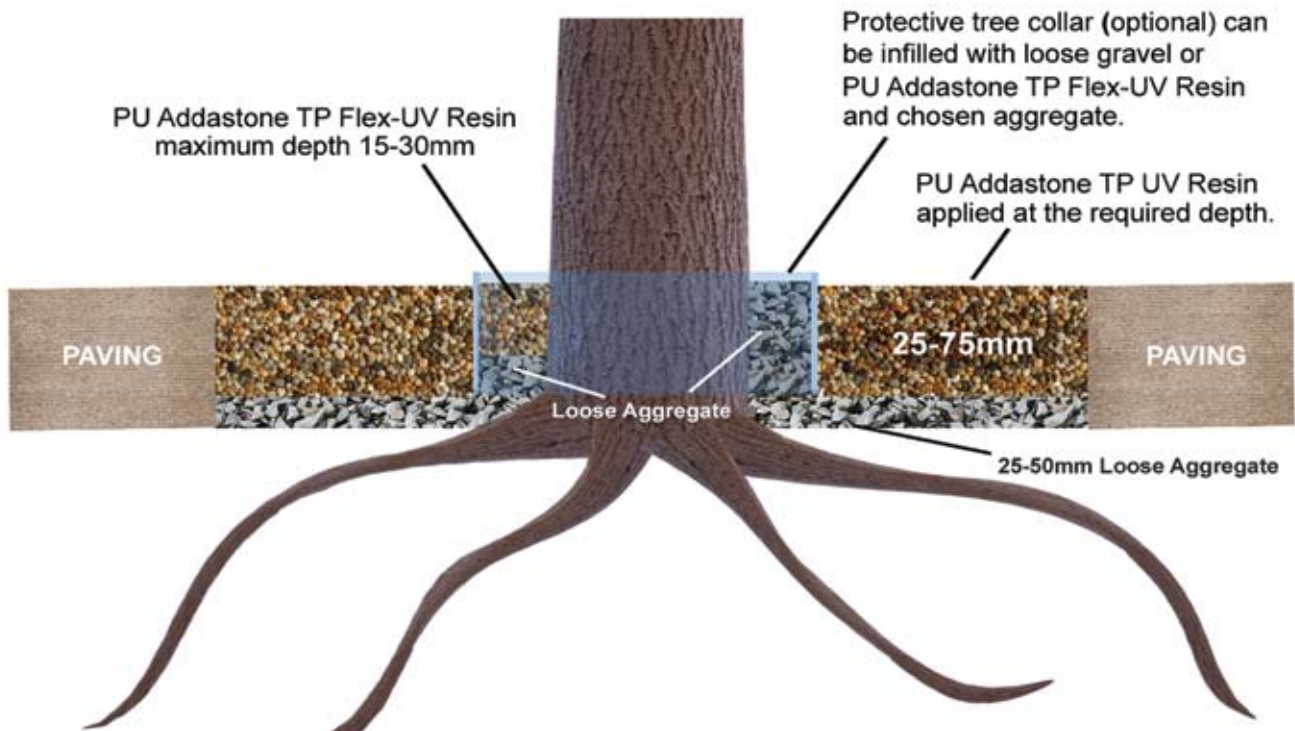


Corn Flint
6-10mm

Resin Bound Porous Tree Pit Surfacing



INSTALLATION



25mm depth - No foot traffic - decorative
 50mm depth - Light foot traffic
 75mm depth - Heavy foot traffic



Brittany Bronze
6-10mm



Dorset Gold
6-10mm



Nat. Red Granite
6-10mm



Silver Grey Granite
6-10mm



Resin Bonded Surfacing



Addastone Resin Bonded surfacing provides the traditional look of loose aggregate.

The finish provides a hard wearing, decorative, textured surface using a 1-3mm, 2-5mm or 3-6mm aggregate.

Chosen aggregates must be washed, clean and dry. Blends can be created as required.

Some loose aggregate will remain on the surface after sweeping.

Anti-slip provided by textured aggregates.

The Addastone Resin Bonded Surfacing System provides an attractive, hard wearing and low maintenance surface by bonding or fixing loose gravel aggregates to concrete, asphalt, wood or metal.

Aggregates bonded in this way give the appearance of loose gravel without the many maintenance problems.

A wide range of natural and recycled aggregates are available making it ideal for heritage sites, landscaping schemes, parks, paths, driveways, roads and visitor attractions. A real alternative to block paving, tarmac and concrete finishes.



NON-POROUS



Chinese Bauxite
1-3mm, Footgrade



Dorset Gold
2-5mm



Nat. Red Granite
1-3mm & 2-5mm



Silver Grey Granite
1-3mm & 2-5mm



Brittany Bronze
1-3mm & 2-5mm

Resin Bonded Surfacing



INSTALLATION

Addastone is generally installed much faster than other paving options, typically up to 1000 sqm per day in suitable conditions and will be ready for sweeping in 6-8 hours.

Addastone can be applied on to the following bases:

Asphalt - the ideal base as it is suitable for all types of trafficking subject to build up and offers flexibility to help prevent cracking caused by movement. Application to existing asphalt surfaces can be carried out subject to suitability. Addacryl primer should be used to seal the asphalt prior to Addastone installation.

Concrete - also suitable for all types of trafficking subject to build up, however, movement joints in the concrete must be reflected through the Resin Bonded finish. Freshly laid concrete should be allowed to cure for a minimum of 28 days and EP Addastone Primer should be used to prime the surface after suitable preparation and prior to application of the Resin Bonded finish.

Timber - also suitable, however, all timber must be clean and dry prior to priming with EP Addastone primer.

Suitable for Car Parks • Access Roads • Driveways • Patios • Pathways • Courtyards

addastone[®]



Guyanan Bauxite
1-3mm, Footgrade



Rhine Gold
2-5mm



Trent Pea
3-6mm



Autumn Gold
1-3mm & 2-5mm



Corn Flint
1-3mm & 2-5mm

Reference Projects - Resin Bound Surfacing



Abbotsford House, Scotland
Terrabound Rhine Gold



Pickie Park, Bangor
Terrabound Terracotta & Rhine Gold



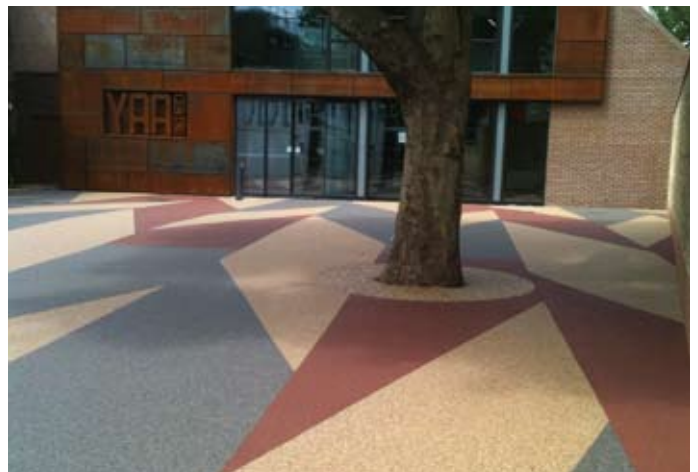
Edinburgh Zoo, Scotland
Terrabound Trent



Jo Yeates Memorial Garden
Addabound Natural Beach



Nottingham Trent University
Addaset Autumn Gold & Trent



The Yaa Centre, London
Addaset Terracotta, Rhine Gold, Grey

Reference Projects - Resin Bound Surfacing



Just Retirement Garden, Hampton Court
Addacolor bespoke blend



Exhibition Road, London
Addastone TP Silver Grey



Cenotaph, London
Addastone TP Silver Grey



Labyrinth at Hospice In The Weald
Addaset Lucerne Silver & Addacolor Green



Love Your Garden TV Programme
Addabound Natural Beach & Addacolor



Hengistbury Head, Dorset
Terrabound bespoke blend

Reference Projects - Resin Bonded Surfacing



Wembley
Addastone Chinese + Guyanan Bauxite



George Square, Scotland
Addastone Chinese Bauxite



British Museum, London
Addastone Sienna & Chinese Bauxite



Olympic Great British Garden
Addastone bespoke aggregate



Drakes Place, Plymouth
Addastone Corn Flint



Alexandra Park, Manchester
Addastone Trent Pea

Specifications, Samples and CPD Seminars

Addagrip specifications and technical data sheets can be found on our website
www.addagrip.co.uk



addagrip™ CPD seminars



Throughout the year Addagrip run a series of CPD seminars on resin based products. This includes resin bound, resin bonded and tree pit systems and also covers case studies, specifications and base build ups.

If you would like to book a CPD seminar email us at sales@addagrip.co.uk or telephone us on 01825 761333.

Contact us for samples of our range of external surfacing products via our website or by email sales@addagrip.co.uk



We also have a selection of sample boards available for Architects and Specifiers.



We would like to point out that whilst every care is taken to provide an exact indication of the colours of our products, these aggregates are natural materials which are subject to changes in appearance and colour. Some of the gravel and shingles supplied may occasionally contain minor concentrations of iron minerals which upon weathering may result in areas of rust spot staining. These iron minerals occur naturally within the gravel deposits and Addagrip cannot be held responsible for any loss or damage suffered as a result of such staining.

addagrip™



Manufacturers, formulators and suppliers of quality resin surfacing systems.
For a full range of products, detailed information and specifications please visit:

www.addagrip.co.uk

SWEDEN . UK . IRELAND . RUSSIA . TURKEY . JORDAN . EGYPT . UAE . PAKISTAN . THAILAND . VIETNAM . CHINA . KOREA

Addagrip Terraco Ltd

Addagrip House, Bell Lane Industrial Estate, Uckfield, East Sussex TN22 1QL, United Kingdom

Telephone: +44 (0)1825 761333 Email: sales@addagrip.co.uk

Addagrip Terraco Ltd is a company registered in England
Registered No. 1492055 Vat No. GB 315993925

Iraq Partner:

GreenScape Ltd.

For Landscape & Geosynthetic Engineering

www.greenscape-ltd.com



Contact Details:

Malik Mahmood Ring Road, Opposite to German Village
Sulaymaniyah
Kurdistan Region
Iraq

Tel: +964 (0) 53 3195567

Mob: +964 (0) 770 123 3588

Mob: +964 (0) 770 191 6556

Mob: +964 (0) 750 335 0735

Email: info@greenscape-ltd.com

Home Page: www.greenscape-ltd.com